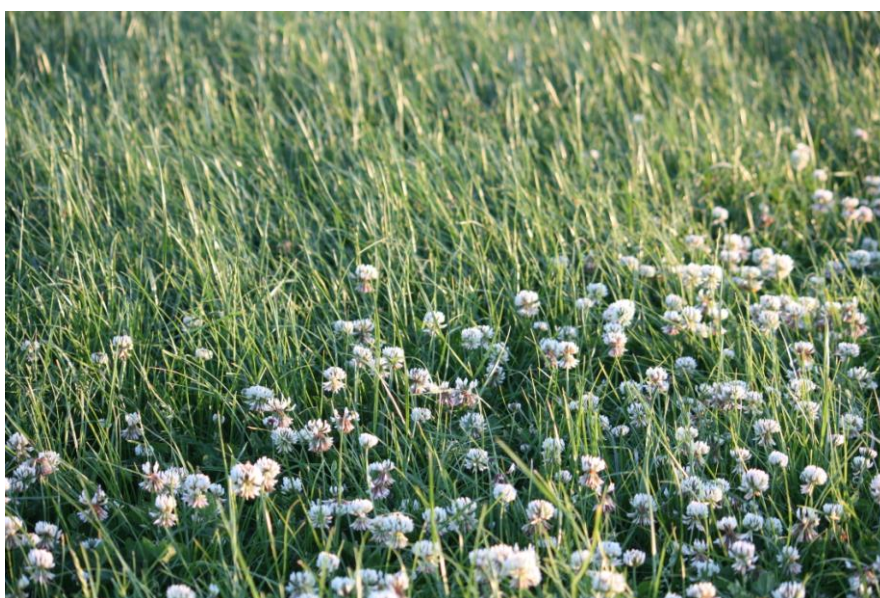




THE BRITISH GRASSLAND SOCIETY



10th Research Conference
20th-21st September, 2011

**La Mon Hotel & Country Club, Castlereagh, Belfast,
BT23 5RF**

&

**Agri-Food and Biosciences Institute, Hillsborough,
Belfast**

Supported by The Stapledon Memorial Trust

Tuesday 20th September

09:30 Registration – Tea and Coffee

10:20 Welcome and introduction

Session 1 **Grazing Management**

10:30 Effect of varying pre-grazing herbage mass on milk production, dry matter intake and grazing behaviour of spring calving dairy cows

M. O'Donovan et al., Teagasc

10:45 Effect of grazing intensity on the performance of high yielding dairy cows

A.J. Dale et al., AFBINI

11:00 Effects of post grazing sward height on dairy cow performance and sward characteristics

E. Ganche et al., Teagasc

11:15 The effect of trampling by dairy cows on a rotationally grazed grass-clover sward

P. Phelan et al., Teagasc

11:30 Effect of supplementary concentrate level in winter and grazing season length on performance of beef bulls at pasture and subsequently during finishing

E.G. O'Riordan et al., Teagasc

11:45 Comparison of residence time in allocated strips and continuous stocking of deferred herbage grazed in late winter-early spring by weanling cattle

B.A. Weldon et al., Teagasc

12:00 Lunch

Session 2 **(Concurrent with Session 3)** **Grass and Forage Production**

13:00 Assessing the yield response of seven forage crops to different rates of cattle slurry applied across four growing seasons

A.J. Dale et al., AFBINI

13:15 Improvements in Perennial Ryegrass Variety performance seen in the England and Wales Recommended List

D. Pendergrast et al., NIAB

13:30 The development stage of the tiller in the first cut predicts the success of regrowth tillers in timothy and tall fescue

K. Pakarinen., MTT Finland

13:45 Factors affecting the optimising of perennial weed control in grassland

D.A. Roberts, Dow AgroSciences

14:00 The Nature and Causes of Spatial Variability in Forage Grass Production in Irish Grassland - *S. Higgins et al., AFBINI*

14:15 First harvest year changes in sward composition of binary mixtures of perennial ryegrass cultivars - *V. Griffith et al., Teagasc*

14:30 Meteorological factors influencing grass growth in the south of Ireland -

C. Hurtado-Uria et al., Teagasc

14:45 Relationships between annual grass yield potential and meteorological records from 1999-2008 - *E.J. Meehan et al., AFBINI*

Session 3 **(Concurrent with Session 2)** **Production Systems and KT**

13:00 The performance of Holstein-Friesian and Jersey x Holstein-Friesian dairy cows within a low concentrate input grazing system and a high concentrate input total confinement system

E.R. Vance et al., AFBINI

- 13:15 Comparison of dairy farming systems
D.J. Roberts et al., SAC
- 13:30 The effect of stocking rate and calving date on milk production, lactation profiles and dry matter intake of Holstein-Friesian dairy cows
B. McCarthy et al., Teagasc
- 13:45 Growth and carcass characteristics of hill lamb genotypes finished on a selection of forage-based diets
R.W. Annett et al., AFBINI
- 14:00 Effect of housing type on use of a field as a loafing area
D.J. Bell et al., SAC
- 14:15 Developing research into practice with Welsh livestock Farmers – the PROSOIL project
H.M. McCalman et al., IBERS
- 14:30 Diversity of drivers and motivations in grassland based Livestock farming systems: A cognitive mapping approach
F. Vanwindekens et al., Walloon Ag Research
- 14:45 Building a modern scientific approach to grassland fertilisation?
E.C. Jewkes et al., GrowHow UK Ltd
- 15:00 Two minute poster presentations (x 6)
- 15:15 Tea and coffee – Poster Sessions
- 16:45 Debate – R&D priorities & funding streams (who's responsibility)
- 17.30 End of sessions
- 19.00 Reception followed by dinner

Wednesday 21st September

- 07.00 Breakfast
- 08.00 Coach leaves for Hillsborough
- 08.30 Day delegate registration opens at Hillsborough

Session 4 (Concurrent with Session 5) Grass and Forage Quality

- 09:00 Discriminate analysis of ryegrass characteristics using near infrared reflectance spectroscopy (NIRS)
G.A. Burns et al., QUB, Teagasc, AFBINI, DAFF
- 09:15 Prediction of the botanical composition of complex mixtures of grasses and clovers by Near Infrared reflectance spectroscopy (NIRS)
M. Cougnon et al., Gent University
- 09:30 Identification of F2 ryegrass mother plants with improved forage quality using Near Infra-red Reflectance Spectroscopy
J. Archer et al., AFBINI
- 09:45 The effects of chicory when ensiled alone or in combination with other forages on fermentation characteristics and silage quality
R. Fychan et al., IBERS
- 10:00 The effects of chicory when sown with different combinations of ryegrass, either with or without red clover, on the nutritive value of harvested forage
C.L. Marley et al., IBERS
- 10:15 Conservation characteristics of ensiled maize whole-crop, cob and stover– harvest date, cultivar and N application rate effects
J.P. Lynch et al., Teagasc
- 10.30 Tea and coffee

Session 5 (Concurrent with Session 4)

Nutrients in Slurries and Soils

- 09:00 Herbage yield and nitrogen offtake in a three-cut silage sward receiving three annual application rates of cattle and pig slurries for 40 years
P. Christie et al., AFBINI
- 09:15 Investigating the potential of trailing shoe slurry spreading apparatus to reduce phosphorus losses in overland flow during the winter period
D.A. McConnell et al., AFBINI/QUB
- 09:30 The effect of repeat applications of cattle slurry applied by splash-plate or trailing-shoe to grassland, on herbage dry matter production and nitrogen use efficiency
S. Gilkinson et al., AFBINI
- 09:45 The accumulation and recovery of nitrogen in mixed farming systems
J.M. Doel et al., Royal Ag College
- 10:00 Accounting for the potential supply of nitrogen from Irish grassland soils
N.T. McDonald et al., Teagasc
- 10:15 Effect of annual applications of pelletised dolomitic lime on soil chemical properties and sward productivity
S. Higgins et al., AFBINI
- 10:30 Tea and coffee

Session 6 Environment and Renewables

- 11:00 DairyCo carbon footprinting study: building the evidence
K.E. Wonnacott et al., DairyCo
- 11:15 A Survey of Grassland Soil Compaction in England and Wales
P. Newell Price et al., ADAS
- 11:30 Changes in soil organic carbon in clay-loam soil under permanent and cultivated grassland under temperate moist conditions
M. Necpalova et al., Teagasc
- 11:45 Grassland management and climatic effects on nitrous oxide fluxes
H. Gordon et al., SAC
- 12:00 Surface emissions and subsurface concentrations of greenhouse gases in a peat grassland respond to addition of cattle urine
A. Boon et al., Reading University
- 12:15 An evaluation of three grass varieties for animal performance and methane production
F. Lively et al., AFBINI
- 12:30 Characterisation of the fibre in two contrasting grasses sampled at various stages of maturity
C. King et al., Teagasc
- 12:45 The forage LINK at IBERS
R. Hayes et al., IBERS
- 13:00 Lunch
- 14:00 Tours around Agri-Food and Biosciences Institute, Hillsborough
- 16:00 Visit and conference ends – optional coach transfer to hotel or airports.

You can register online at www.britishgrassland.com

Those awarded a Stapledon Memorial Trust bursary for this event; please contact the BGS office to register. British Grassland Society, Unit 32C, Stoneleigh Deer Park, Stareton,

Kenilworth, Warwickshire, CV8 2LY

Email: papers@britishgrassland.com Phone: 02476 696600

The British Grassland Society is a registered charity no. 261800